

## Øvre Berge family - 21 pattern tablets

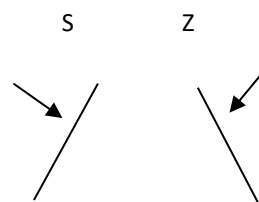
Pattern by Randi Stoltz

Inspired by the Øvre Berge band from Lyngdal, Agder, Norway, 500 AD

		1	2	3	4	5	6	7	8	9	0	1	2	3	4	5	6	7	8	9	0	1			
a	blue	blue	blue	blue	blue	yellow	pink	blue	blue	blue	yellow	pink	blue	blue	blue	yellow	pink	blue	blue	blue	yellow	pink	blue	blue	
b	blue	blue	blue	blue	blue	blue	blue	blue	blue	blue	blue	blue	blue	blue	blue	blue	blue	blue	blue	blue	blue	blue	blue	blue	
c	blue	blue	blue	blue	blue	blue	blue	blue	blue	blue	blue	blue	blue	blue	blue	blue	blue	blue	blue	blue	blue	blue	blue	blue	
d	blue	blue	blue	blue	blue	blue	blue	blue	blue	blue	blue	blue	blue	blue	blue	blue	blue	blue	blue	blue	blue	blue	blue	blue	
	S	Z	S	Z	S	S	S	S	S	S	S	S	S	S	S	S	S	S	S	S	S	S	Z	S	Z

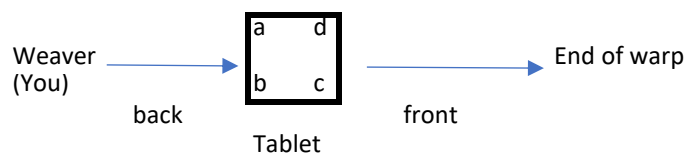
### Tablet slant and threading

(Lines = tablets, arrows = threads)



### Hole position

(When you start)



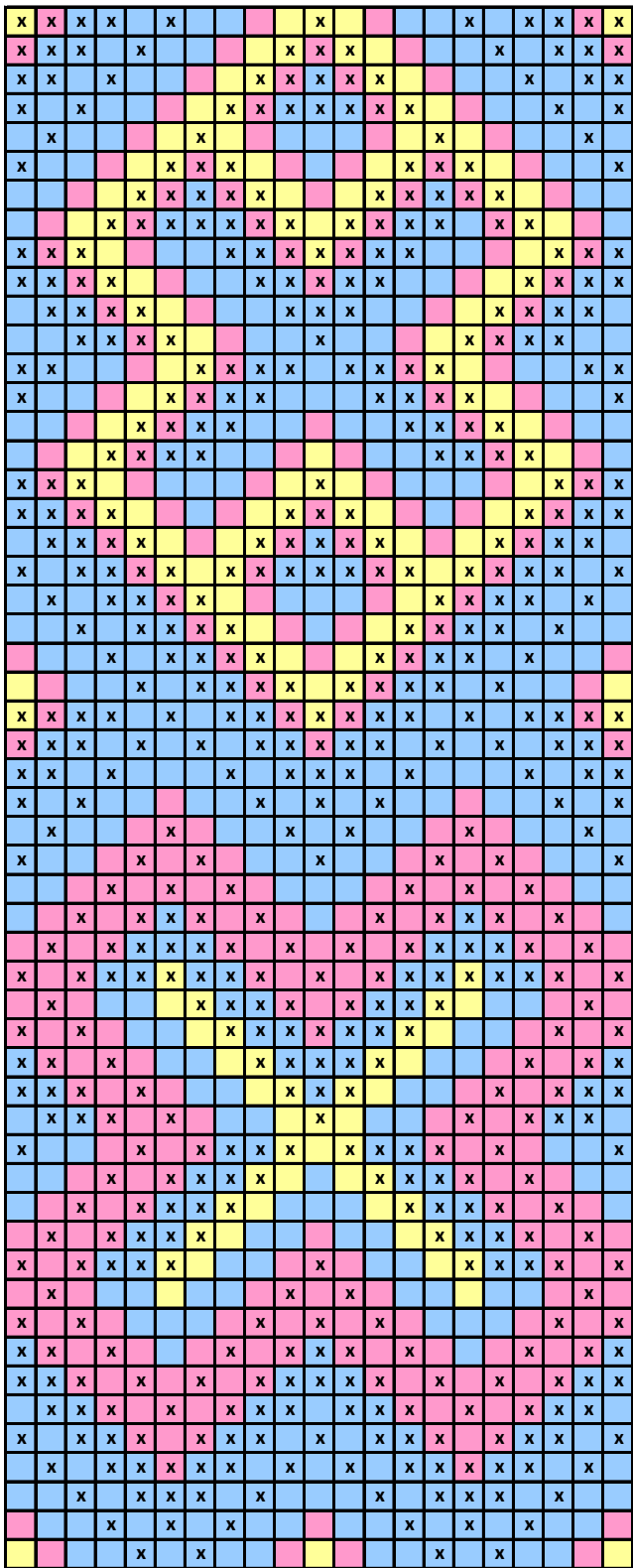
### Weaving

Work the pattern from the bottom up.

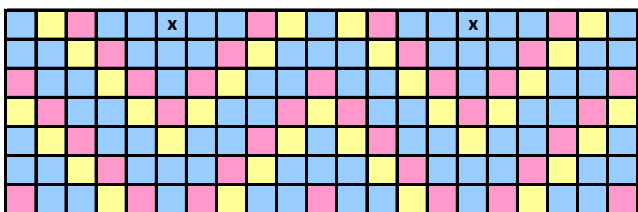
- turn forwards
- turn backwards

Weave the whole pattern, or make your own combination of figures.

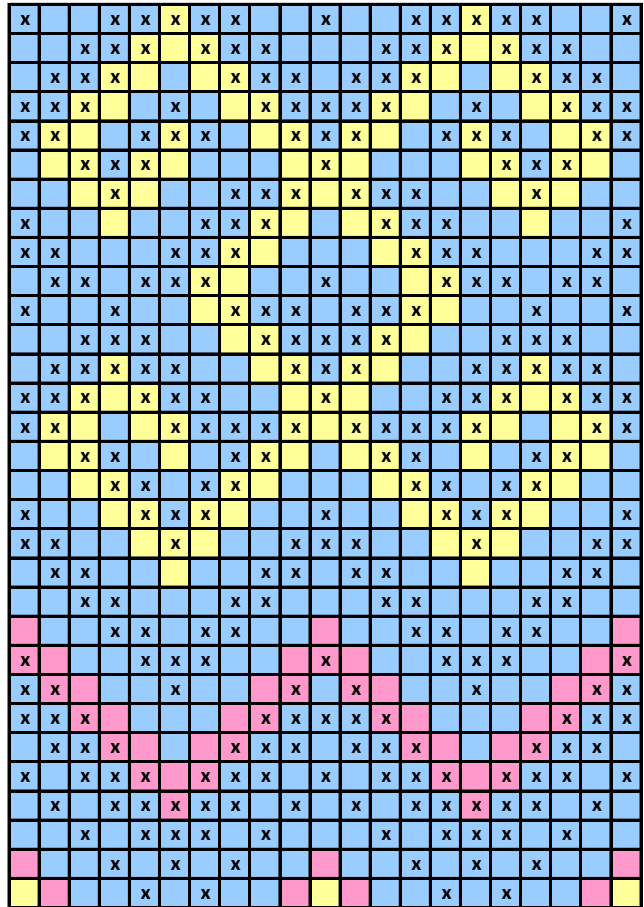
This pattern is free. If you wish to pay for it, please make a contribution to an environmental organization near you - to help secure a happy life for future tablet weavers on the planet.



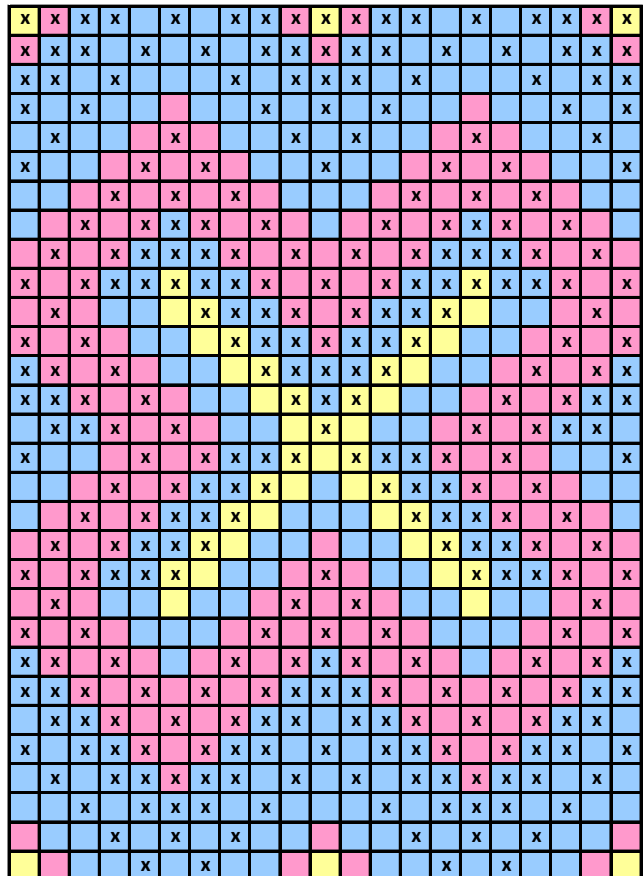
1 a

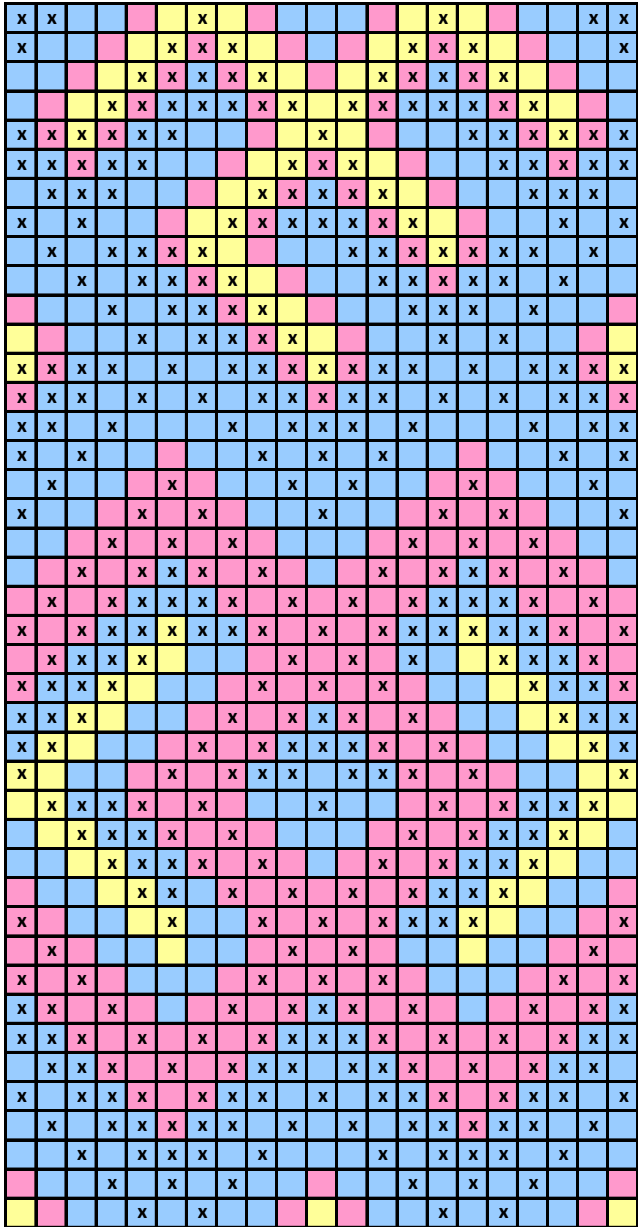


Start

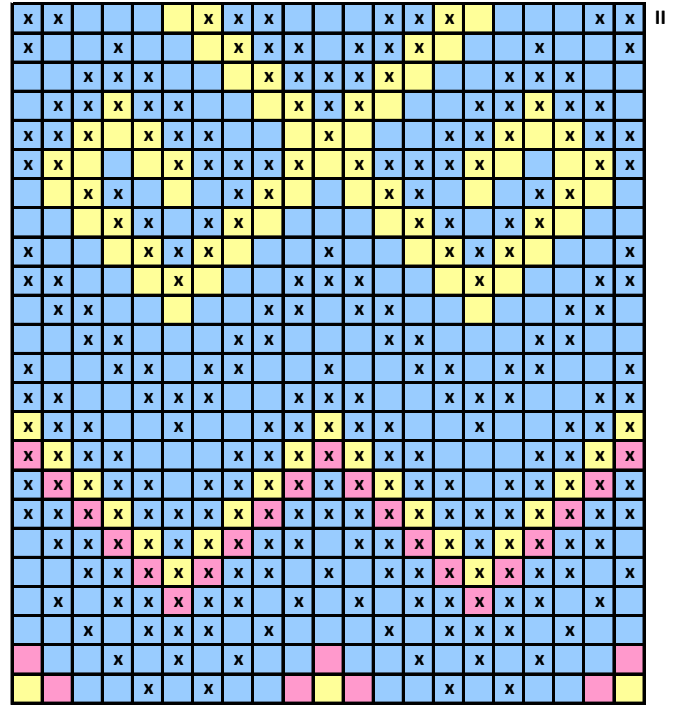
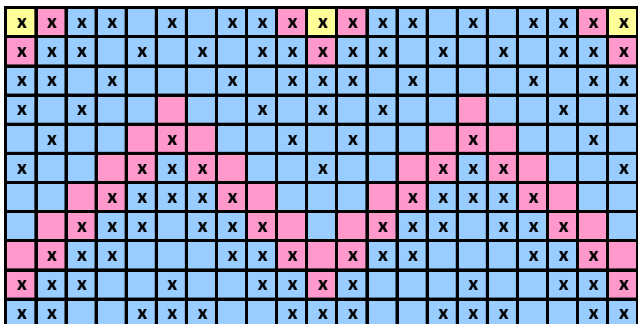


1 b

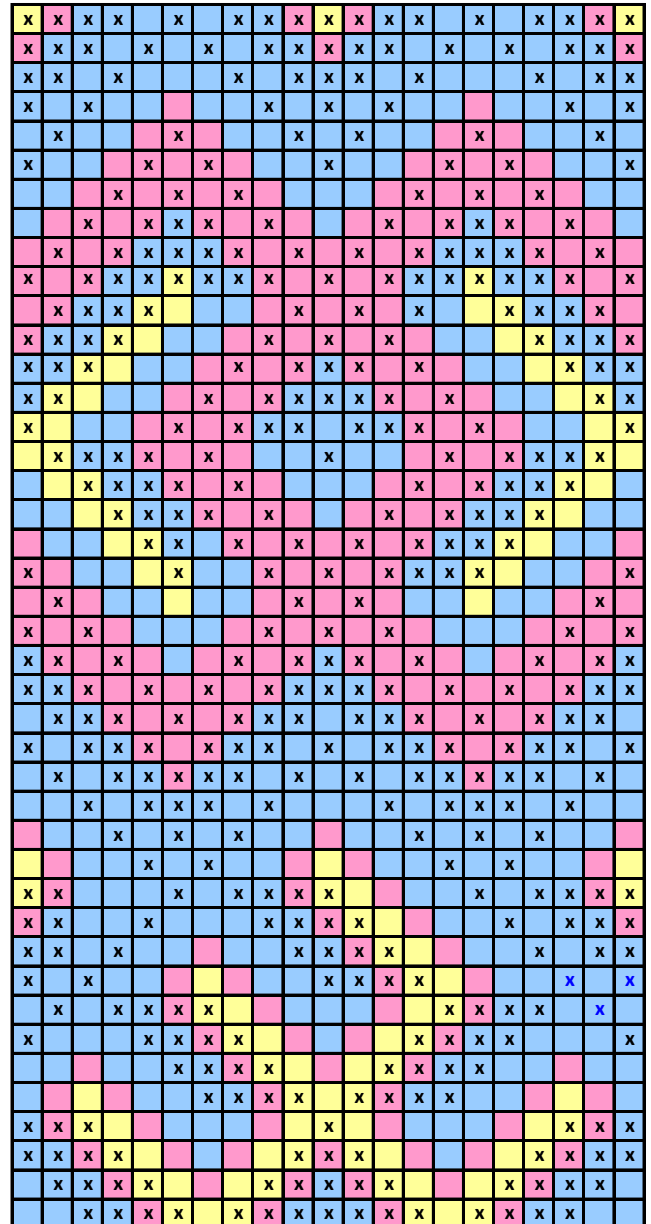


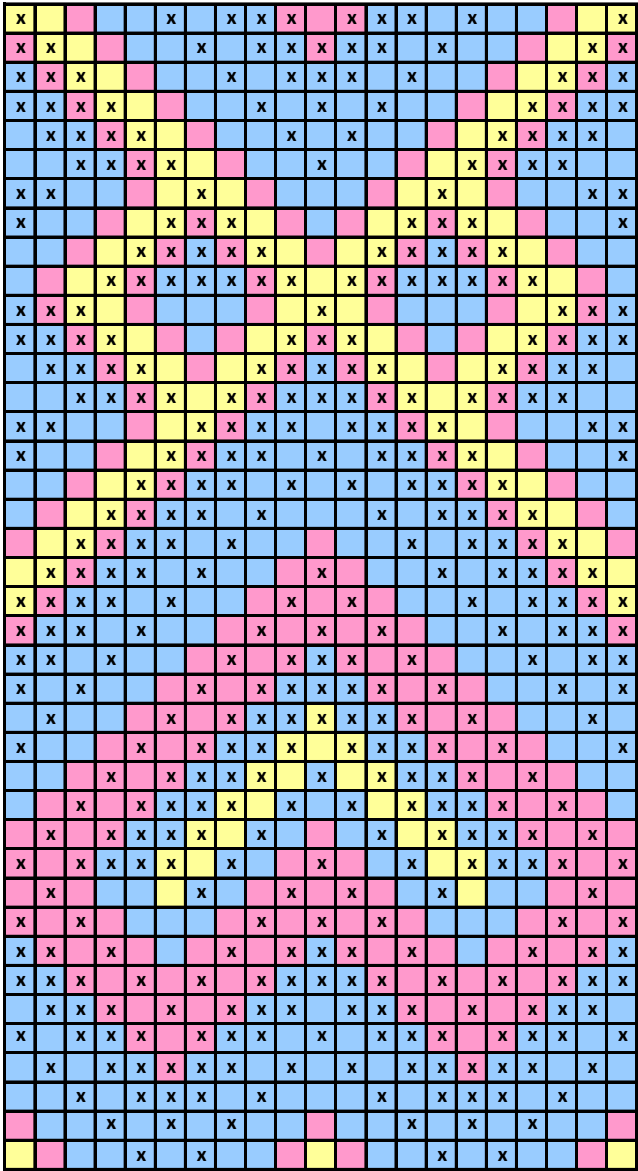


2 a

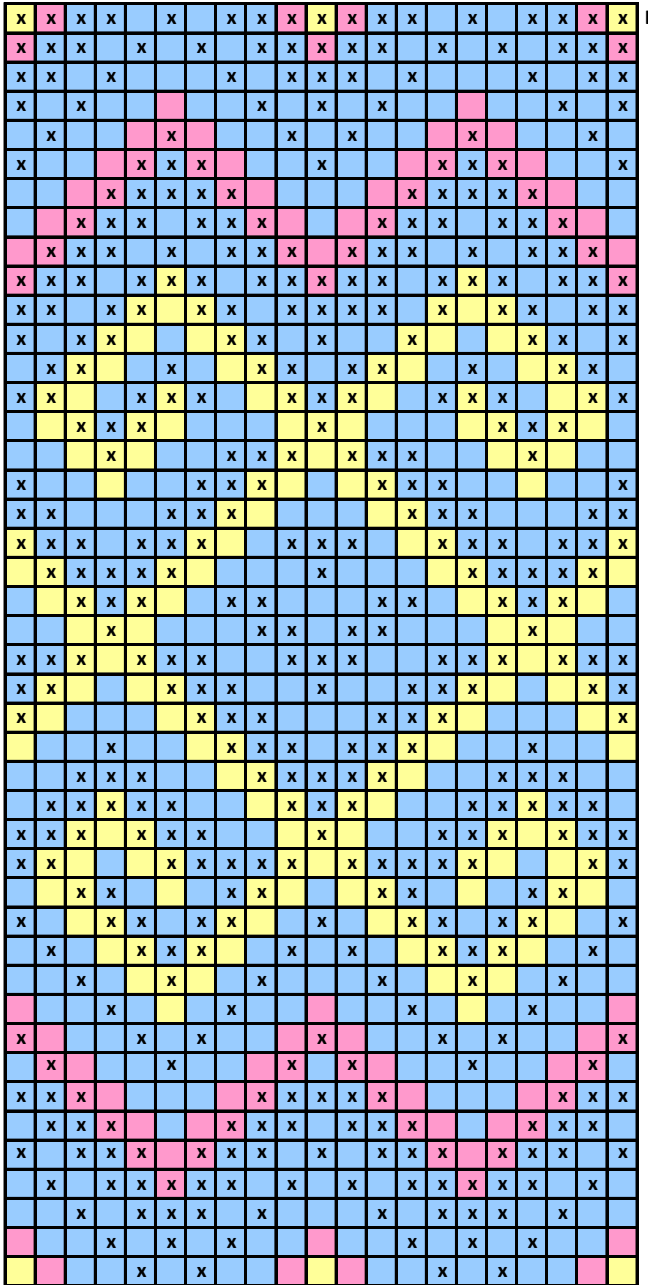


2 b

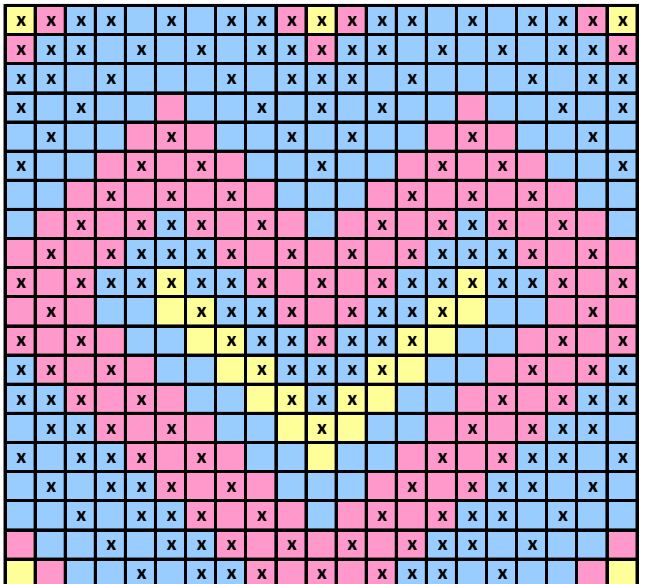
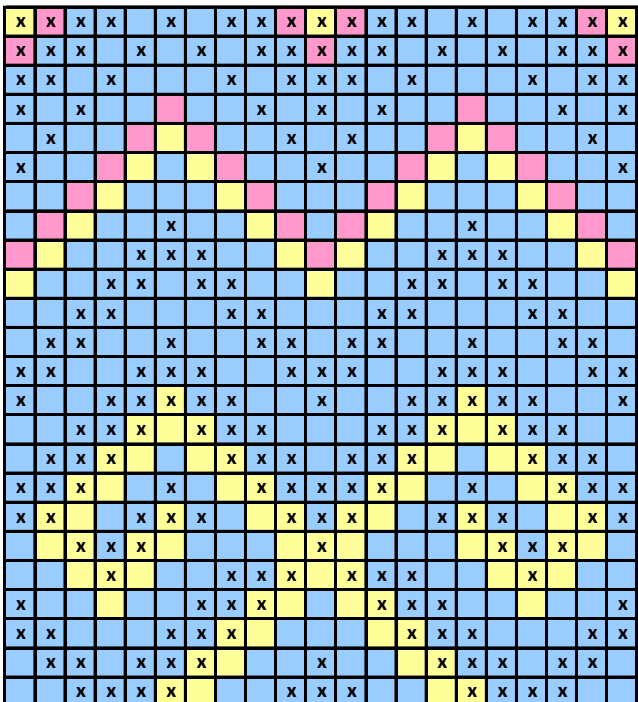


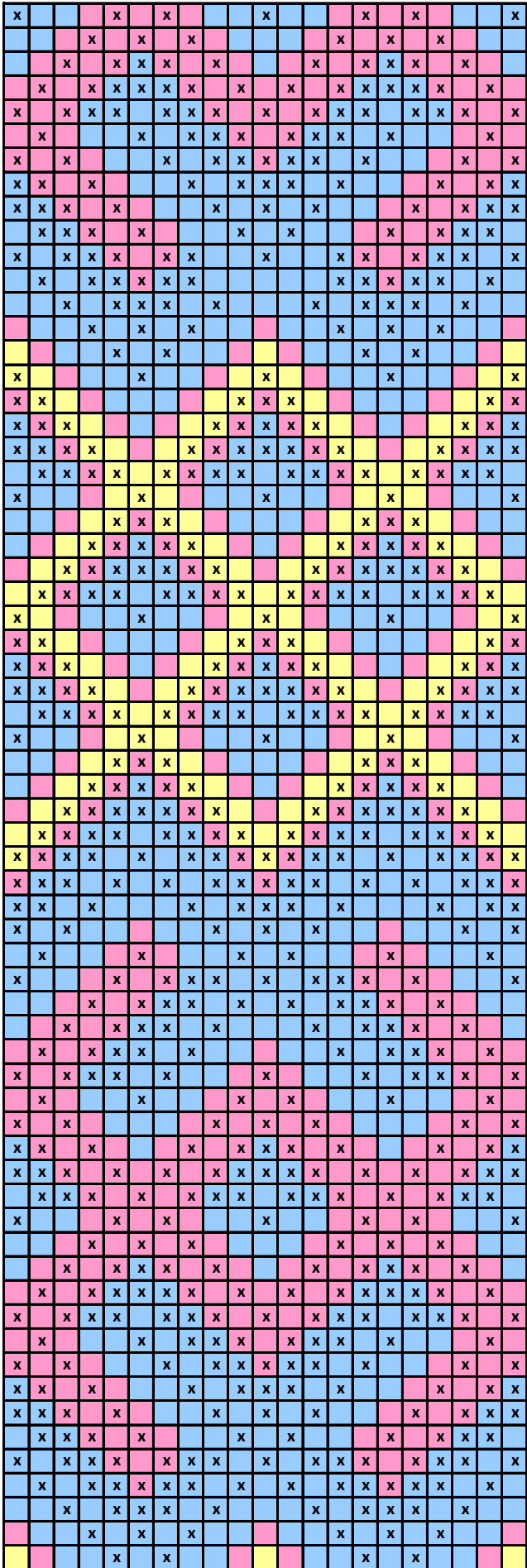


3 a

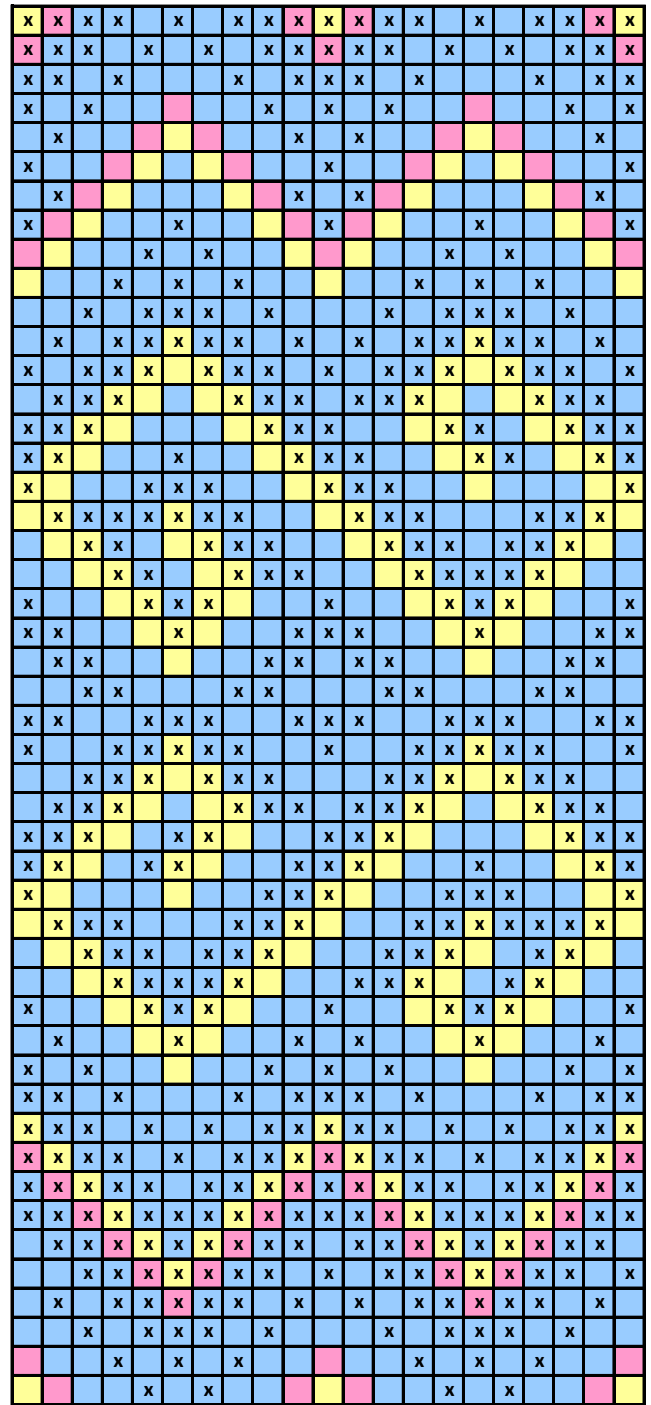


3 b

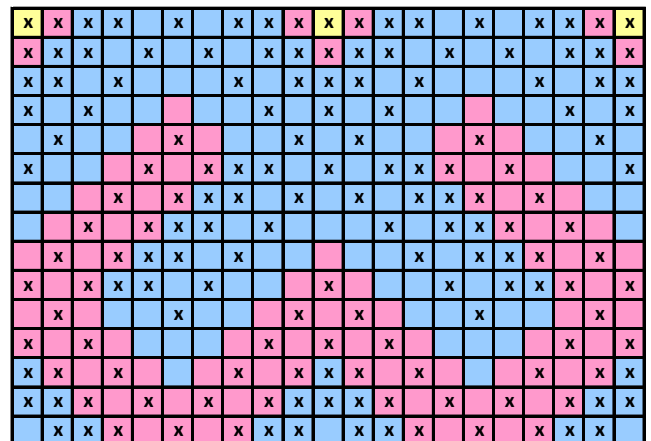


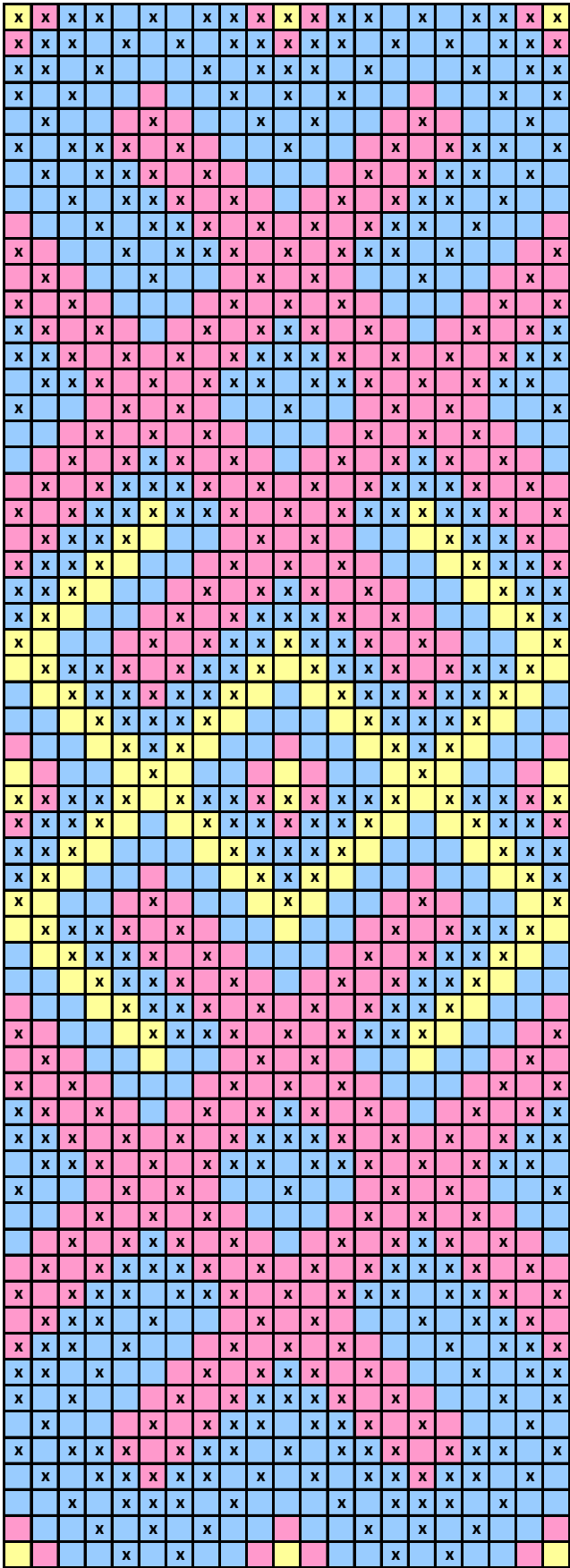


4 a

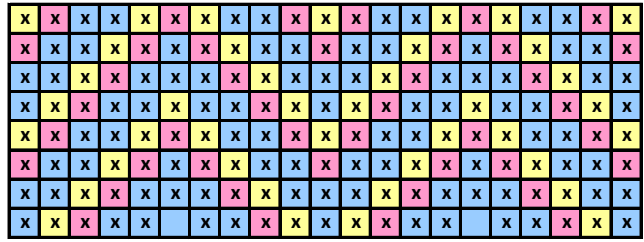


4 b

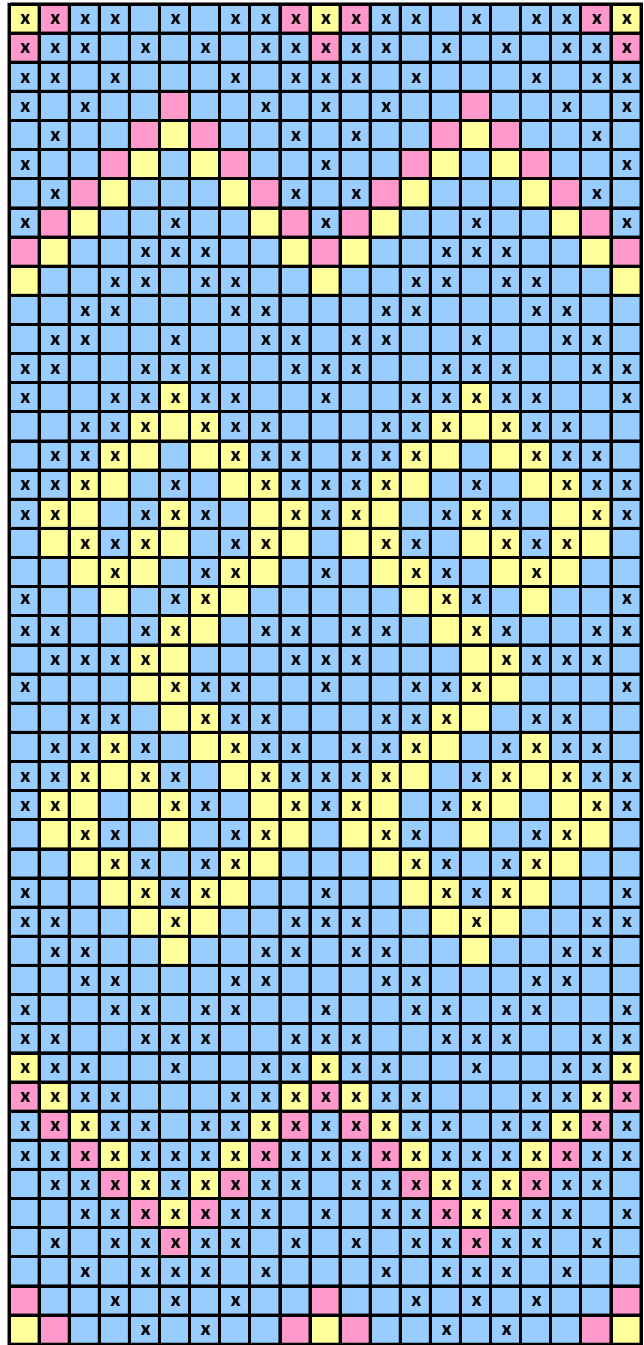




5 a



End



5 b