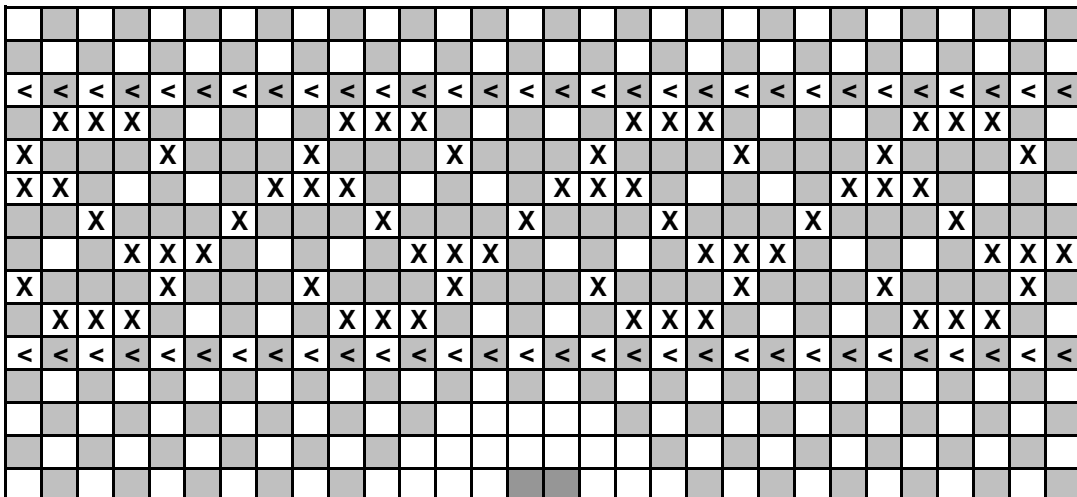
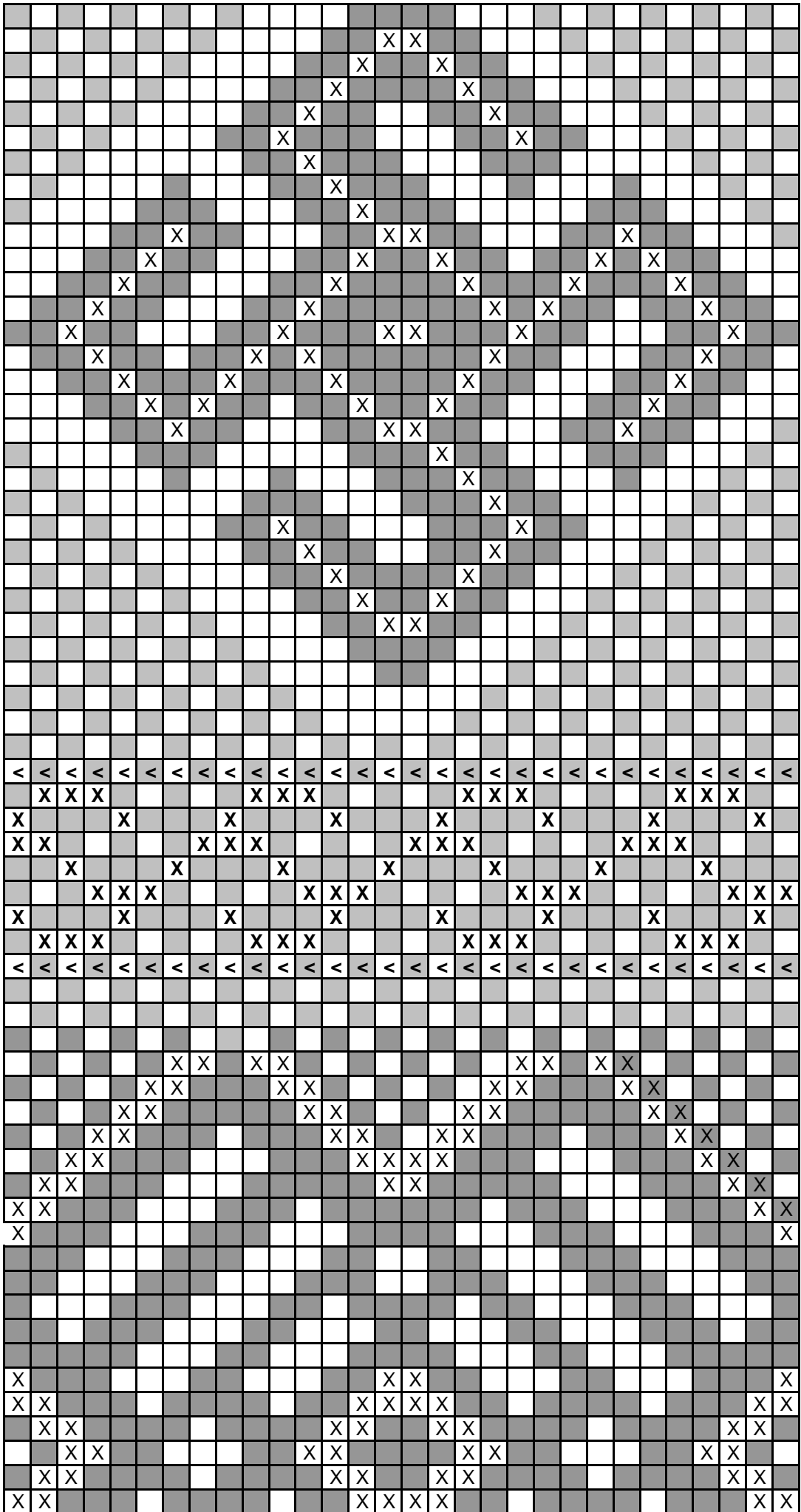
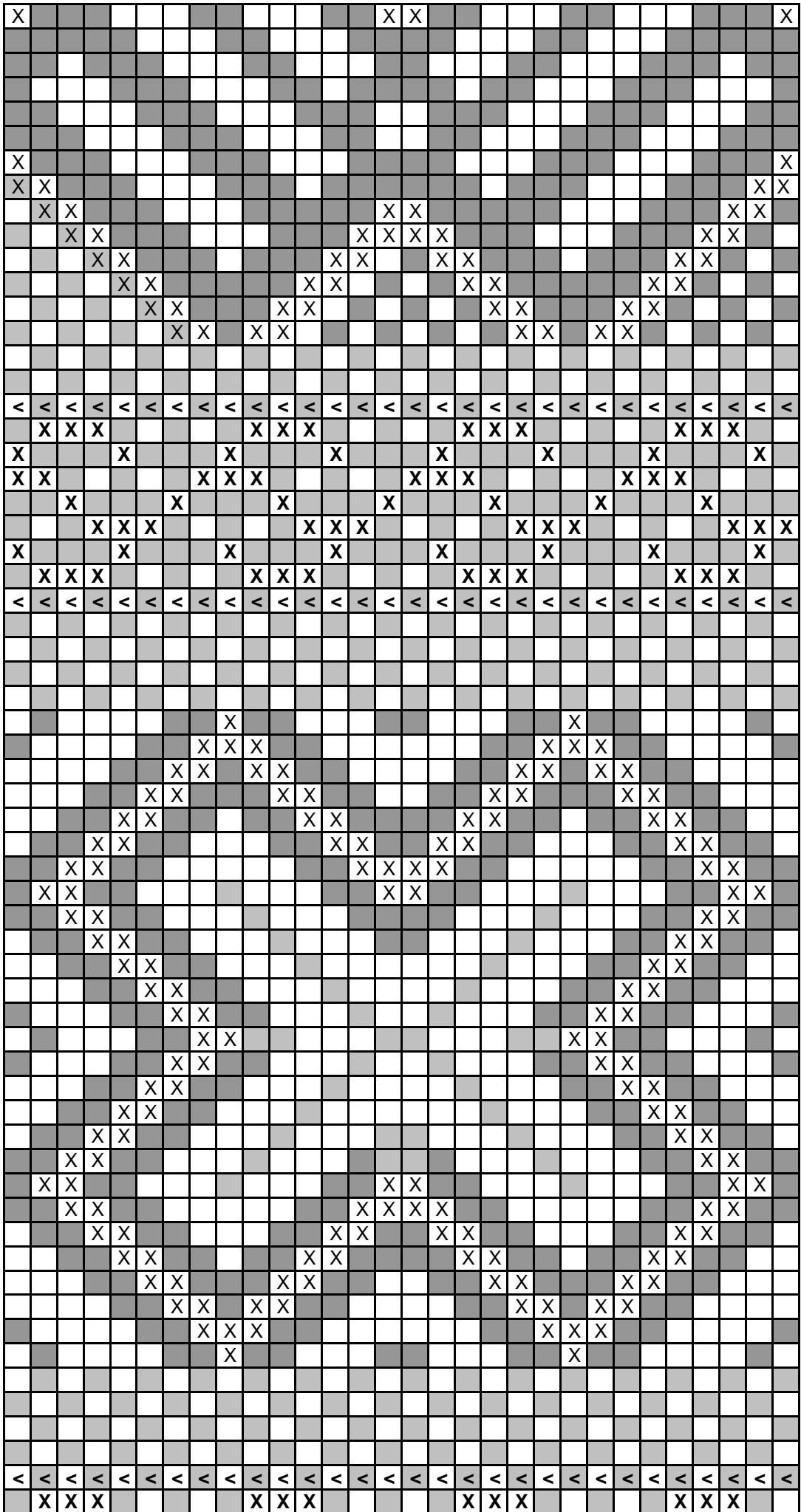


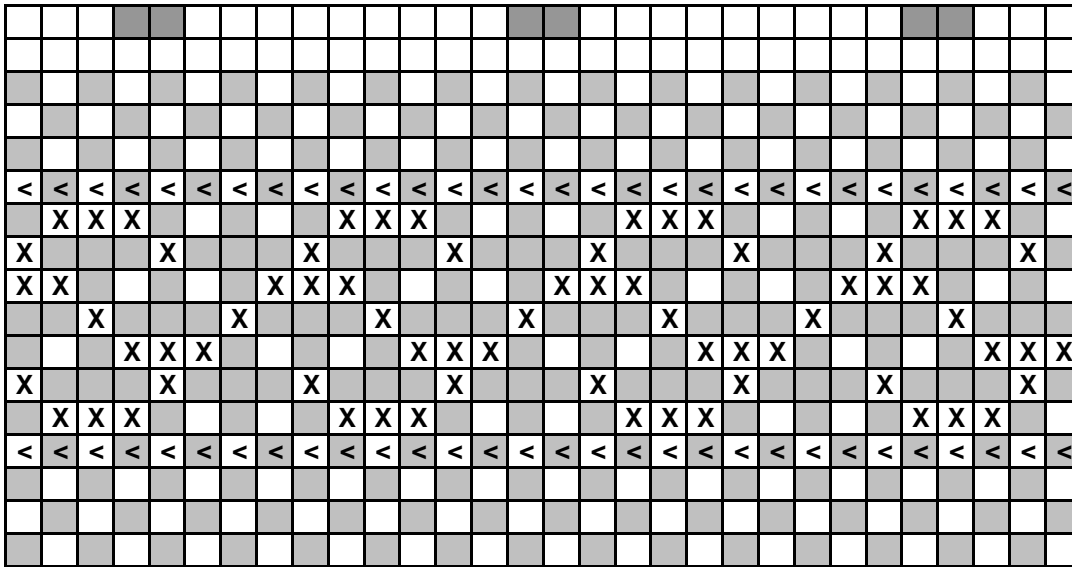
Fragment 2











Start by turning tablet 2,4,6 etc forward

### Threading

30 tablets for pattern, 2 empty holes in each, 6 tablets for edges

	1	2	3	1	2	3	4	5	6	7	8	9	0	1	2	3	4	5	6	7	8	9	0	1	2	3	4	5	6	7	8	9	0	4	5	6			
a																																							
b																																							
c																																							
d																																							
	S	Z	S																																		Z	S	Z

- Dark red wool, as thin as possible
- Light red wool
- X Brocading with yellow or white silk
- < Soumak, light red

### How to work

Edges: quarter turns, all tablets in same direction  
 Pattern: Quarter turns, but only back and forth, never round. Turn tablet forward to get the light thread up. backward to get the dark thread up, let them stand still if there is no change.

1. One square in the pattern is one tablet/one row. Turn tablets and compare the upper row of threads with the pattern.
2. If there is brocading or soumak on the row, finish it before the weft.

Make the band wide for the figures to form harmonious squares.  
 Wish you good luck an a lot of patience!

Randi